

# FIG TREE POCKET TUCKSHOP MENU

FTPSSTUCKSHOP@GMAIL.COM

## HOT FOOD

PASTA BOLOGNESE GF AVAIL	\$4.70
FRIED RICE GF	\$4.40
PESTO PASTA	\$4.70
CHICKEN TENDER MINI WRAP	\$4.50
HALF CORN COB	\$1.00
GARLIC BREAD	\$1.20

## FRESH/TOASTED SANDWICHES

### TOASTIES:

CHEESE/HAM/CHICKEN/TOMATO FROM \$3.50

### SANDWICHES:

VEGEMITE/HONEY \$2.10

CHEESE/EGG/LETTUCE FROM \$2.80

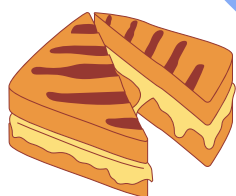
HAM/CHICKEN/TUNA FROM \$3.00

SALAD FROM \$3.00

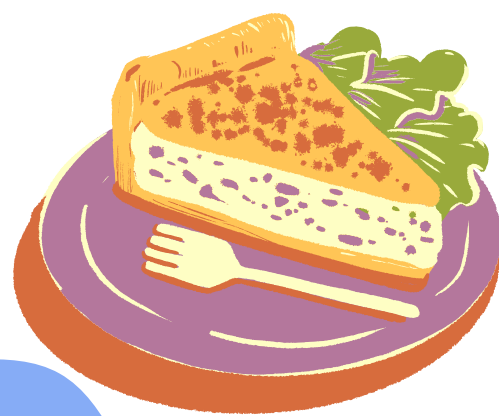
TOMATO, CARROT, LETTUCE, BEETROOT, CHEESE

HAM, CHICKEN, TUNA

GF AVAIL



WWW.FLEXISCHOOLS.COM.AU  
PLACE ORDERS BEFORE 8AM  
ON THE SAME DAY.



## SNACKS

SEASONAL FRUIT	\$1.50
PIKELETS PLAIN/JAM	\$.70/.80
YOGURT CRUNCH	\$2.60
RAISIN TOAST	\$1.50
BOILED EGG	\$1.00
POPCORN	\$.80
MUFFINS BLUEBERRY	\$1.50
GINGERBREAD	\$2.50

## DRINKS

MILK	\$1.60
WATER	\$2
APPLE/TROPICAL	\$2.00
CHOC/STRAW FLAV MILK	\$2.50



## FROZEN SNACKS

QUELCH	\$.80
LEMONADE ICE BLOCK	\$2.00
VANILLA ICE CREAM DF	\$2.00
MANGO BAR	\$2.00
CHOC MILK BAR	\$2.00

# DAILY SPECIALS



## WEDNESDAY

SMOOTHIES \$3.60

SUSHI FROM \$3.80

- INARI POCKETS
- SUSHI ROLLS
- RICE PAPER ROLLS
- BENTO BOX/SALAD



SUSHI ORDERS NEED TO BE  
PLACED THE TUESDAY  
BEFORE BY 9AM

## THURSDAY

HAM & CHEESE PIZZA \$4.30

QUICHE \$5.00

## FRIDAY

CHICKEN BURGER FROM \$5.00

HOT DOG \$4.00

BEEF & BEAN BURRITO \$5.00

MINI CHEESEBURGER \$4.50



WWW.FLEXISCHOOLS.COM.AU  
PLACE ORDERS BEFORE 8AM  
ON THE SAME DAY.

## BIRTHDAY BUCKETS

BIRTHDAY ON A SCHOOL DAY?

WE CAN SUPPLY QUELCH ICE BLOCKS FOR YOUR CHILDS CLASS

WITH A BIRTHDAY CARD

EMAIL US THE WEEK BEFORE TO CONFIRM.

\$15



FTPSS TUCKSHOP

IS A P&C RUN BUSINESS

WE PREP LUNCH ORDERS FOR FIRST BREAK

WHICH IS AT 11AM

WEDNESDAY/THURSDAY/FRIDAY

WE ALWAYS NEED VOLUNTEERS

PLEASE COME AND JOIN US

YOU CAN SIGN UP ON THE ROSTER HERE

OR EMAIL [FTPSSSTUCKSHOP@GMAIL.COM](mailto:FTPSSSTUCKSHOP@GMAIL.COM)

WE'D LOVE TO SEE YOU!

